

Genuine

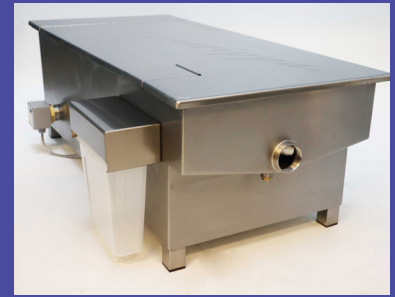
Fatstrippa

Patented Grease Removal System

Data Sheet

Model Number

FS 360



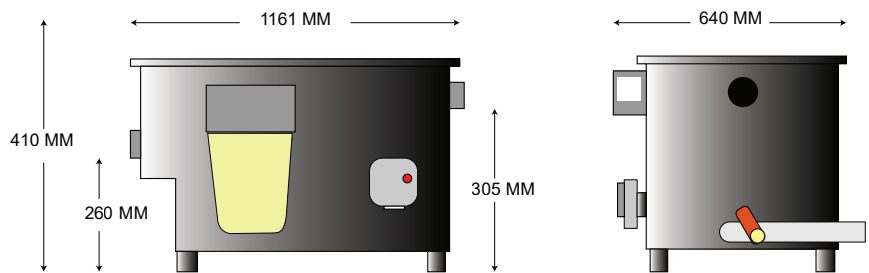
Specifications

Maximum Effluent Separation Rate	3.6 Litres Per Second
Discharge Water Oil Concentration	<100 PPM
Recovered Oil Water Concentration	< 5%
Maximum Design Effluent Concentration	90% Oil / 10% Water
Optimum Operating Temperature	30-40 Deg C.
Heater Element	Single Phase 1.5 Kw 240V Thermostat Controlled (Default Temp Setting 35 Deg C). Hert 50/60
Inlet	40 mm Female Fitting
Outlet	50 mm Female Fitting
Silt Outlet	1 Inch BSP Female Fitting
Oil Cassette Capacity	3.75 Litres
Construction	3 mm 304 Grade Stainless Steel
Warranty Construction	10 Years
Heater Warranty	1 Year

Overview

- FS 360 is designed for use in large kitchens or multiple small kitchens with total wastewater flow rates less than 3.60 Litres / Second.
- Variations available. See Website for information www.fatstrippa.eu
 - Flour Specific Strainer Basket
 - Extended Strainer Basket
 - Integrated Timer Heater Element
 - Left or Right Hand
 - Rear Inlet
- For use with:
 - Combination ovens
 - Steamers
 - Rotisserie ovens
 - Fryers
 - Wok stations
 - Dish and pot washer machines
 - Sinks
 - Floor gullies
 - Beverage equipment
 - Ventilation system (including cooker hoods, soot abatement and spark arrestor hoods) incorporating a drain for water wash down.

External Dimensions Quick Reference



Compliance Note

All Fatstrippa Products meet the requirements of:

- UK Water Industry Act 1991
- Approved Document H building regulations – Drainage and Waste Disposal, 2015 Edition. BS.EN 1825:2004 and BS.EN.1825:2002.
- Designed in accordance with Standard PDI-G101.
- Environmental Protection Act 1990 — Food Safety & Hygiene Regulations 2013 & European Regulation (EC) No. 852/2004*
- Construction Products Regulations (CPR) requirement under the Scope of harmonised European standards (hEN's) for CE marking.
- BS EN12056-1:2000 with regards to the health and safety of users and occupiers and the penetration of toxic or noxious odours in buildings